

YHA London Thameside | sensory map

Ground floor



Facilities key

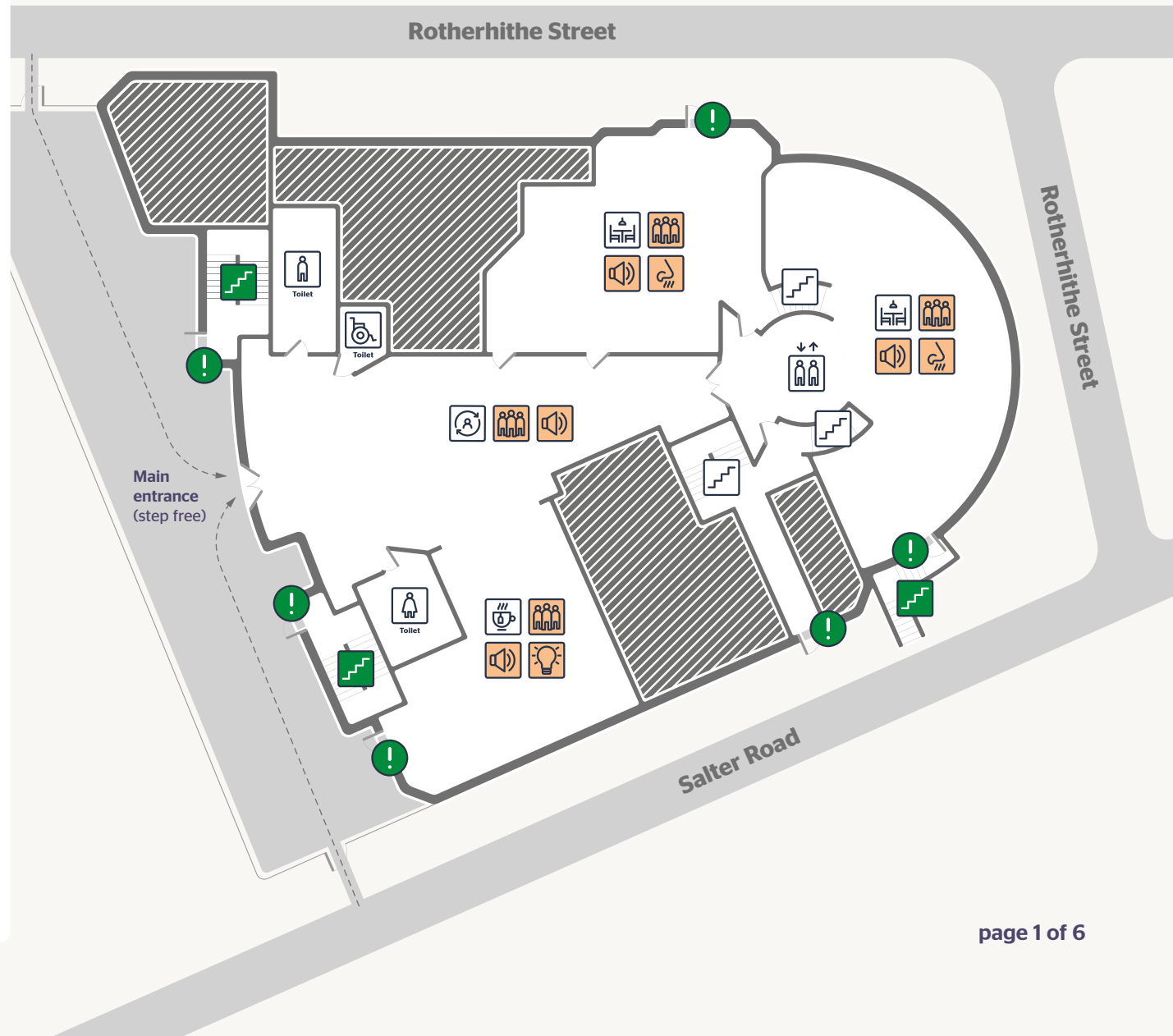
- | | |
|----------------------------------------------------------------------------------|------------------------------------------------------------------------------------------------------------------------------------------------------------------------------|
| Stairs | Lifts |
| Toilets | Fully accessible toilet |
| 24-hour reception
Can get busy depending on when groups check-in. | Dining area
Busy between 7am - 10am and 5pm - 9pm. Strong smell between these times. |
| Café/bar
Medium busy between 8am - 11am and 6pm - 10pm. | Self-catering kitchen
Quiet but can get medium busy between 7am - 10am and 6pm - 9pm. |
| Shared lounge
Quiet area | En-suite bedrooms |
| Staff-only | Accessible en-suite bedrooms |
| Refuge points
Disabled person's PEEP refuge point with intercom to reception. | Fire exit
For emergency use only. Doors are fitted with a loud audible alarm.

Our fire alarms have a loud siren and flashing beacon. They are tested every Monday. |
| Emergency exit stairs
For emergency use only. | |

Sensory key

Our hostel can be busy or quiet depending on the time of the day. Please look at the map and the facilities key above to see which areas in our hostel are more noisy or quiet, and at what times.

- | | | | |
|-------|---------|--------------|---------------|
| Noisy | Crowded | Bright light | Strong smells |
|-------|---------|--------------|---------------|



YHA London Thameside | sensory map

Basement



Facilities key



Stairs



Lifts



Toilets

Toilet



Fully accessible toilet

Toilet



24-hour reception

Can get busy depending on when groups check-in.



Dining area

Busy between 7am - 10am and 5pm - 9pm. Strong smell between these times.



Café/bar

Medium busy between 8am - 11am and 6pm - 10pm.



Self-catering kitchen

Quiet but can get medium busy between 7am - 10am and 6pm - 9pm.



Shared lounge

Quiet area



En-suite bedrooms



Staff-only



Accessible en-suite bedrooms



Refuge points

Disabled person's PEEP refuge point with intercom to reception.



Fire exit

For emergency use only. Doors are fitted with a loud audible alarm.



Emergency exit stairs

For emergency use only.

Our fire alarms have a loud siren and flashing beacon. They are tested every Monday.

Sensory key

Our hostel can be busy or quiet depending on the time of the day. Please look at the map and the facilities key above to see which areas in our hostel are more noisy or quiet, and at what times.



Noisy



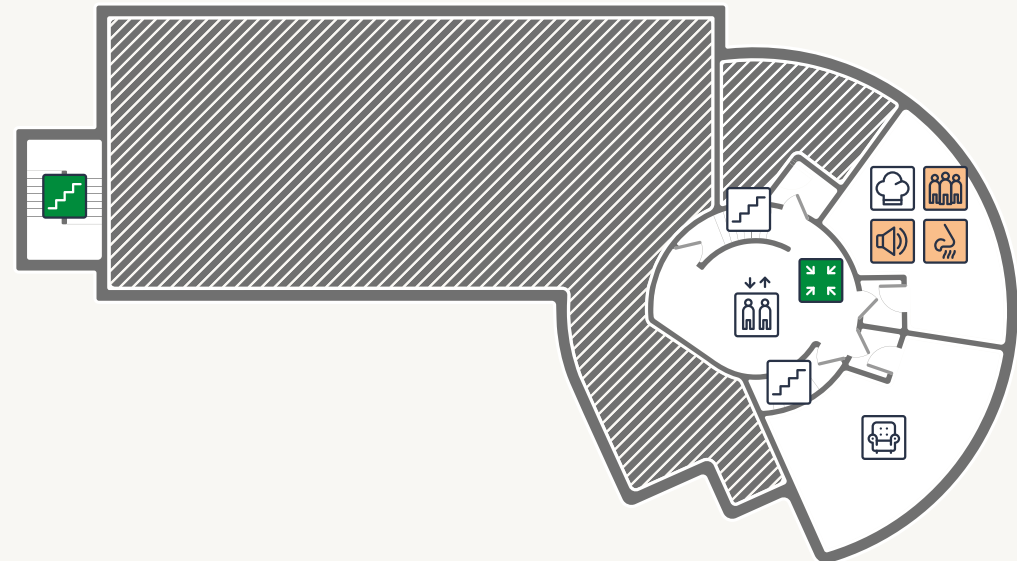
Crowded



Bright light



Strong smells



YHA London Thameside | sensory map

Floor 1



Facilities key

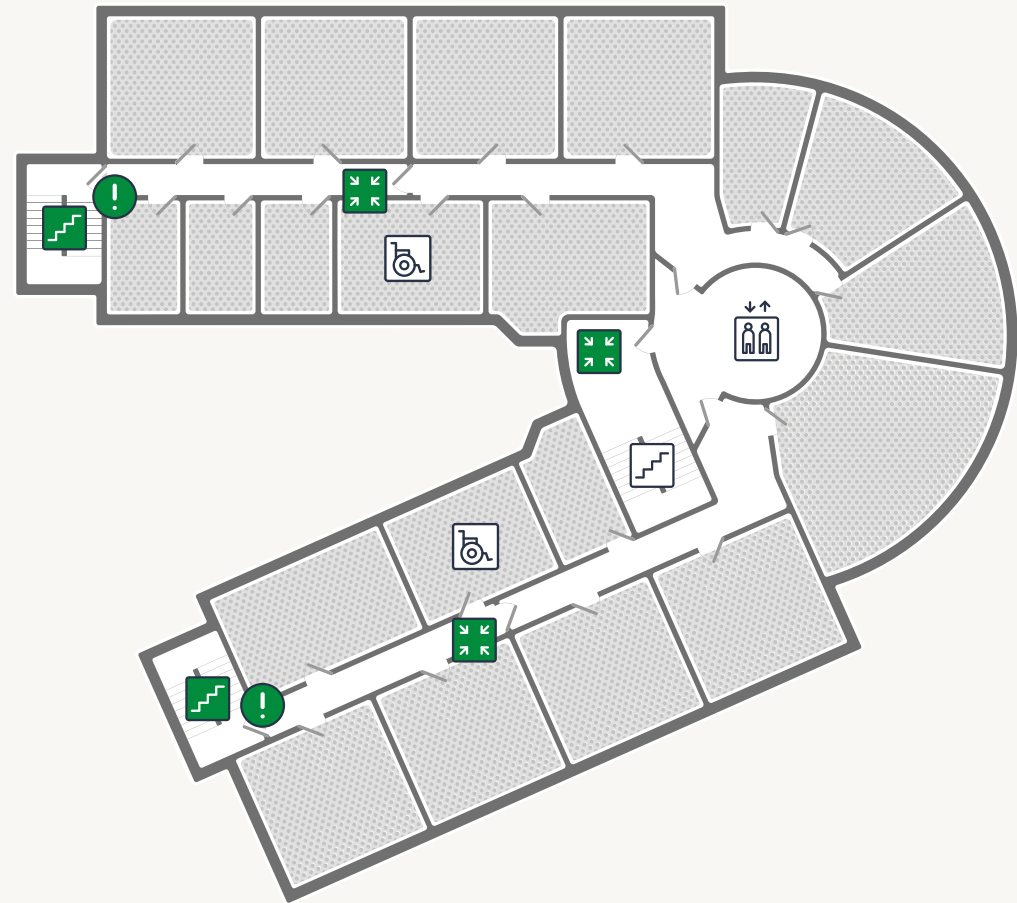
- | | |
|----------------------------------------------------------------------------------|------------------------------------------------------------------------------------------------------------------------------------------------------------------------------|
| Stairs | Lifts |
| Toilets | Fully accessible toilet |
| 24-hour reception
Can get busy depending on when groups check-in. | Dining area
Busy between 7am - 10am and 5pm - 9pm. Strong smell between these times. |
| Café/bar
Medium busy between 8am - 11am and 6pm - 10pm. | Self-catering kitchen
Quiet but can get medium busy between 7am - 10am and 6pm - 9pm. |
| Shared lounge
Quiet area | En-suite bedrooms |
| Staff-only | Accessible en-suite bedrooms |
| Refuge points
Disabled person's PEEP refuge point with intercom to reception. | Fire exit
For emergency use only. Doors are fitted with a loud audible alarm.

Our fire alarms have a loud siren and flashing beacon. They are tested every Monday. |
| Emergency exit stairs
For emergency use only. | |

Sensory key

Our hostel can be busy or quiet depending on the time of the day. Please look at the map and the facilities key above to see which areas in our hostel are more noisy or quiet, and at what times.

- | | | | |
|-------|---------|--------------|---------------|
| Noisy | Crowded | Bright light | Strong smells |
|-------|---------|--------------|---------------|



YHA London Thameside | sensory map

Floor 2



Facilities key



Stairs



Lifts



Toilets

Toilet



Fully accessible toilet

Toilet



24-hour reception

Can get busy depending on when groups check-in.



Dining area

Busy between 7am - 10am and 5pm - 9pm. Strong smell between these times.



Café/bar

Medium busy between 8am - 11am and 6pm - 10pm.



Self-catering kitchen

Quiet but can get medium busy between 7am - 10am and 6pm - 9pm.



Shared lounge

Quiet area



En-suite bedrooms



Staff-only



Accessible en-suite bedrooms



Refuge points

Disabled person's PEEP refuge point with intercom to reception.



Fire exit

For emergency use only. Doors are fitted with a loud audible alarm.



Emergency exit stairs

For emergency use only.

Our fire alarms have a loud siren and flashing beacon. They are tested every Monday.

Sensory key

Our hostel can be busy or quiet depending on the time of the day. Please look at the map and the facilities key above to see which areas in our hostel are more noisy or quiet, and at what times.



Noisy



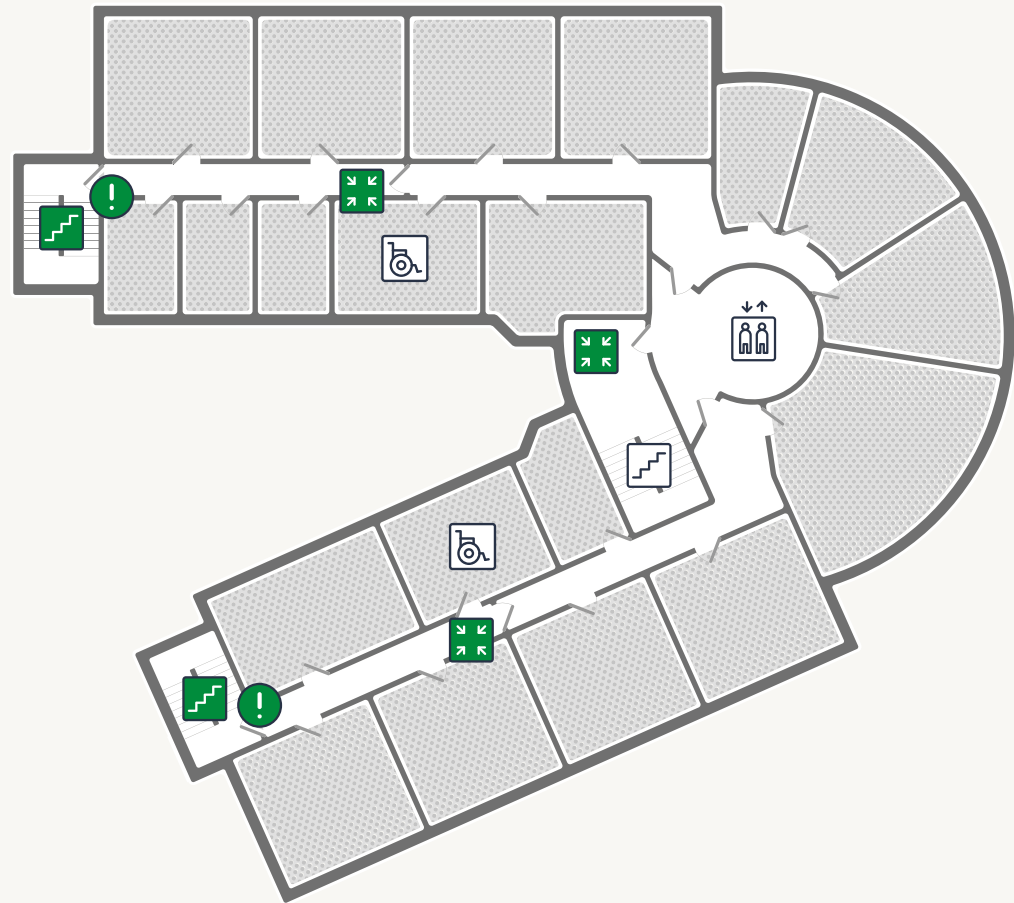
Crowded



Bright light



Strong smells



YHA London Thameside | sensory map

Floor 3



Facilities key



Stairs



Lifts



Toilets

Toilet



Fully accessible toilet

Toilet



24-hour reception

Can get busy depending on when groups check-in.



Dining area

Busy between 7am - 10am and 5pm - 9pm. Strong smell between these times.



Café/bar

Medium busy between 8am - 11am and 6pm - 10pm.



Self-catering kitchen

Quiet but can get medium busy between 7am - 10am and 6pm - 9pm.



Shared lounge

Quiet area



En-suite bedrooms



Staff-only



Accessible en-suite bedrooms



Refuge points

Disabled person's PEEP refuge point with intercom to reception.



Fire exit

For emergency use only. Doors are fitted with a loud audible alarm.



Emergency exit stairs

For emergency use only.

Our fire alarms have a loud siren and flashing beacon. They are tested every Monday.

Sensory key

Our hostel can be busy or quiet depending on the time of the day. Please look at the map and the facilities key above to see which areas in our hostel are more noisy or quiet, and at what times.



Noisy



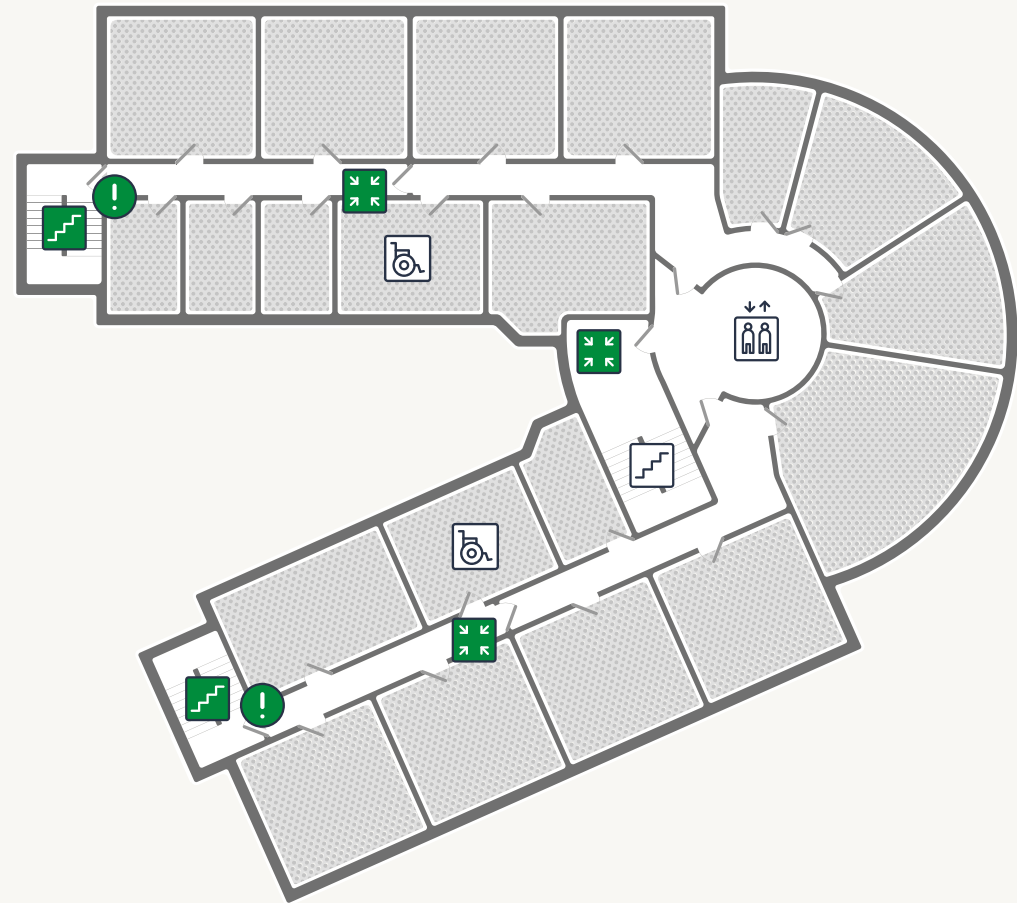
Crowded



Bright light



Strong smells



YHA London Thameside | sensory map

Floor 4



Facilities key



Stairs



Lifts



Toilets

Toilet



Fully accessible toilet

Toilet



24-hour reception

Can get busy depending on when groups check-in.



Dining area

Busy between 7am - 10am and 5pm - 9pm. Strong smell between these times.



Café/bar

Medium busy between 8am - 11am and 6pm - 10pm.



Self-catering kitchen

Quiet but can get medium busy between 7am - 10am and 6pm - 9pm.



Shared lounge

Quiet area



En-suite bedrooms



Staff-only



Accessible en-suite bedrooms



Refuge points

Disabled person's PEEP refuge point with intercom to reception.



Fire exit

For emergency use only. Doors are fitted with a loud audible alarm.



Emergency exit stairs

For emergency use only.

Our fire alarms have a loud siren and flashing beacon. They are tested every Monday.

Sensory key

Our hostel can be busy or quiet depending on the time of the day. Please look at the map and the facilities key above to see which areas in our hostel are more noisy or quiet, and at what times.



Noisy



Crowded



Bright light



Strong smells

