



YHA Ennerdale – Access Statement

Introduction

YHA Ennerdale is located 3 miles up a forest track in the remote Ennerdale valley so, if you're looking to get away from it all, then this hostel is ideal. Enjoy views over Steeple and Pillar, see junipers through the wild Ennerdale valley or stroll up to the High Stile Ridge and Haystacks. YHA Ennerdale is perfect for Coast-to-Coast walks and reconnecting with the wild. The closest town is Cleator Moor, 10 miles away.

We aim to cater for the needs of all visitors in this two-storey building. We have a ground floor bedroom, though none of our bedrooms or bathrooms are accessible to modern standards.

We look forward to welcoming you. If you have any queries or require assistance, please phone 01629 592700 or email customerservices@yha.org.uk. You can also view photos of the hostel at www.yha.org.uk/hostel/yha-ennerdale.

This access statement was last updated in April 2024.

Pre-arrival

- The nearest rail station is Whitehaven, 13.6 miles away.
- No buses run to the hostel. The closest is in Kirkland, 4 miles away. There is a summer service to Buttermere, which requires a hike over Red Pike.
- A local taxi company can provide accessible taxis when pre-booked.
- The roads approaching the hostel can be steep and are often narrow. They are surfaced with tarmac but there is no pavement or streetlighting. The last 3 miles are along an unsurfaced forest track with potholes. This road has a maximum speed of 15mph and is suitable for smaller cars (not 4x4 vehicles).
- The hostel's location can be viewed on YHA's website at www.yha.org.uk/hostel/yha-ennerdale/directions.
- You can contact the hostel by phone or e-mail (see contact information).

Car parking and arrival

Parking is available on-site for up to 12 cars. There are no marked bays, but we can reserve a space for you (the closest is a few metres from the main entrance). The car park slopes down towards the hostel and is surfaced with loose gravel.

Due to protective measures from the Forestry Commission, only one car can be taken up to the hostel. Any additional cars can be parked at Bowness Knott (3 miles) or Bleach Green (4 miles). Please contact hostel for details.

From the car park there is a sloped, loose gravel path with a step down to the hostel entrance. There is no ramp or handrail. If you let us know what time you are coming,

we will do our best to assist with moving to and from cars. The car park is unlit apart from automatic lighting near the hostel.



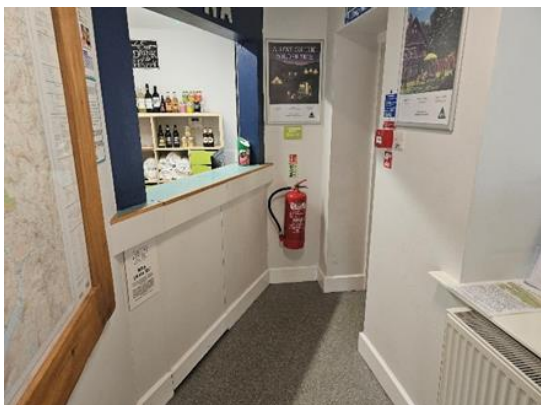
The car park and exterior forest track can both be used as a drop-off location. Staff are on duty from 5pm and will always help with any arrival needs.

Main entrance and reception

To enter the hostel there is a small step threshold through a manual, single leaf door which opens inwards into the porch (69cm). The porch has seating for two. From here there is another single leaf door (67cm) which leads through into reception.



The reception area is level and surfaced with lino. There is a portable induction loop available on request. The corridor here is too narrow to allow for seating – however, the lounge adjoins this area and there is plenty of seating available here.



Public areas

Halls, corridors and stairs

There is good colour contrast to floor, walls and doorways throughout the building. All public areas, halls, stairs and landings are well-lit using a combination of ceiling and wall lights. Internal door measurements range between 68cm and 73cm wide.

There is no lift at YHA Ennerdale so access to the first floor is only by a set of 14 steps. The stairs are carpeted and have a handrail on one side. Corridor flooring is carpet on the first floor.

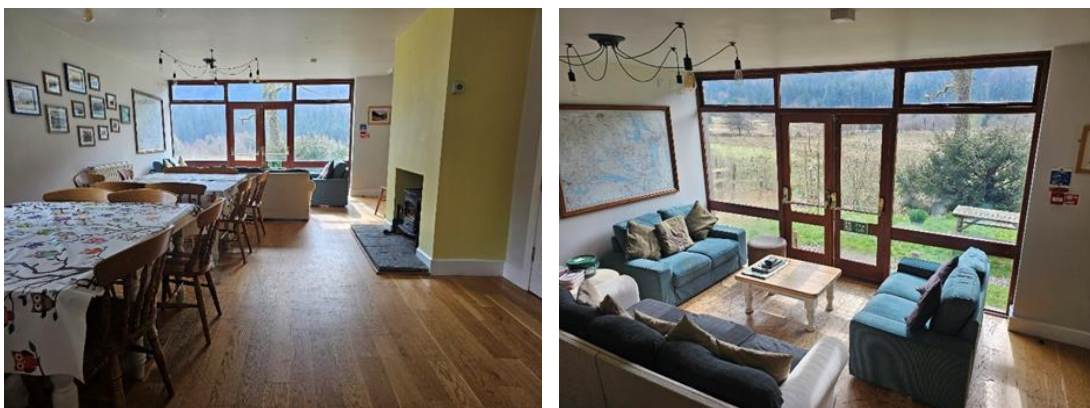


Common room

The common room is located on the ground floor with level access from reception (76cm). This space comprises our lounge and dining room. The floor is level and surfaced with wood-effect laminate. The room is brightly lit by natural light in the day and ceiling lights at night.

There are comfy armchairs and coffee tables, along with dining tables and straight-backed chairs without armrests. All furniture can be moved - please ask at reception if you require assistance.

Table service is available (please ask at reception). We can also cater for dietary requirements or particular likes or dislikes - please advise us of these before arrival.



Self-catering kitchen

The self-catering kitchen is located on the ground floor and has level access from the common room via a single leaf door. The floor is level and surfaced with non-slip lino. The room is well-lit with ceiling lights.

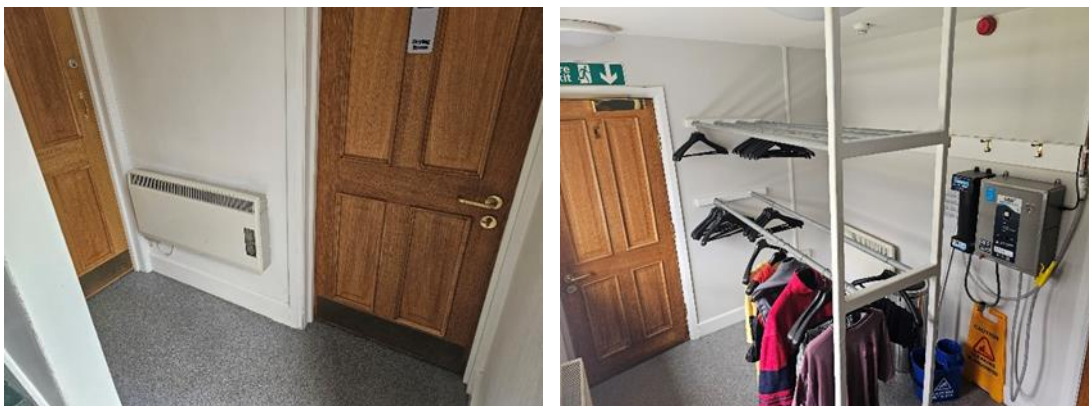
The self-catering kitchen contains 2 domestic-sized cookers, large fridge-freezer and range of kitchen utensils, crockery and cutlery. The sinks are fitted with lever taps. Crockery and some kitchen equipment are kept in high shelving units – we are happy to move these to lower storage if required.



Drying facilities

The drying room is located on the ground floor. To reach it, there is a level threshold through a single leaf door from the common room and then through a second single leaf door with a step out to the covered veranda.

There is then level access across the concrete veranda and in through another single leaf door with a step. Followed by another single leaf door into the drying room. We do not have laundry facilities.



Bedrooms and bathrooms

Unless otherwise stated, all bedrooms have bunk beds. Rooms are carpeted and well-lit with ceiling lights plus a washbasin. All bedding is provided.

All bathrooms have LED lighting and non-slip flooring. Standard showers have a step up to enter.



Ground floor

- One en-suite room that sleeps up to 4 people. It includes 2 sets of bunk beds.

First floor

- Two rooms that sleep up to 4 people each. They include 2 sets of bunk beds.
- Two rooms that sleep up to 6 people each. They include 3 sets of bunk beds.
- Four communal showers.
- Two communal WCs.

Grounds and garden

The hostel is situated on a wooded slope. There are gravel paths around both sides of the building with the path on the west wing being unobstructed. There are no play areas, though we do have a fenced wooded area. There are two picnic benches to the rear of the property onlooking the valley floor.



Cycle store

The cycle shed is located to the side of the hostel, close to the car park.

Additional information

- Pets are not permitted at YHA Ennerdale, though assistance dogs are welcome throughout – please notify us at the time of booking.
- Smoking is not permitted anywhere in the hostel.

- Braille signs are fitted on room and corridor doors.
- Emergency lighting and fire alarms are fitted. We ensure that all guests are evacuated in the event of fire or similar emergency. Arrangements for guests needing assistance to evacuate should be discussed beforehand.
- Evacuation procedures are displayed in each bedroom.
- Mobile phone reception is poor within the hostel.
- Wi-Fi is not available at this hostel.

Contact information

- Address: YHA Ennerdale, Cat Crag, Ennerdale, Cleator, Cumbria, CA23 3AX
- Telephone: 0345 3719116
- Email: ennerdale@yha.org.uk
- Ordnance Survey map: 89
- Local taxi: Bigrigg Cabs 01946 810024

We welcome your feedback to help us to continue making improvements. Please contact us directly if you have any queries or if you would like to make any comments.