

# Create a Wildlife reserve



**Create a micro wildlife reserve and show it to your friends.**

Time | 30 mins

Cost | Free

Location | Outdoors/At Camp/At a centre

Group size | Teams

## You will learn

### Value the outdoors

Enjoy being outside, feel comfortable in nature, and feel connected to the natural environment.

### Help you community

Be able to take an active role in the community, give to others, and make the world a better place.



## Compassion

Take action to look after the natural world.

[Discover the five pathways to nature connectedness >](#)

## You will need

- Hula hoops
- Short pieces of rope or string
- Sticks (or something to mark out small spaces)

## Park rangers

1. Everyone should talk about nature reserves and national parks. Think about how they were set up and what they aim to do. Highlight that there is usually something special or unique to that area that the reserve or park will be based around.
2. Everyone should split into pairs or small groups. Each group should create their own micro wildlife reserve or national park.
3. Each group should explore the area and find something that will be the centrepiece of their reserve or park.
4. Each group needs to mark the edges of their reserve or park, using a hula hoop, rope or something similar to form a boundary around their centrepiece.
5. Each group should talk about why they chose that area and why it should be protected. They should showcase their micro wildlife reserve or national park to the other groups.

## Reflection

| Time    | Activity  |
|---------|---|
| 15 mins | This activity was all about valuing the outdoors and helping your community by noticing things in your local environment that you want to protect. Why do we need to protect areas of nature? What would happen to people, plants and animals if we didn't protect them? How do you feel when you spend time out in nature? |
|         | Everyone selected a different area to protect, which had something special or unique. How did you choose the area for your micro nature reserve or national park? Why did you feel like that was something worth protecting?  |

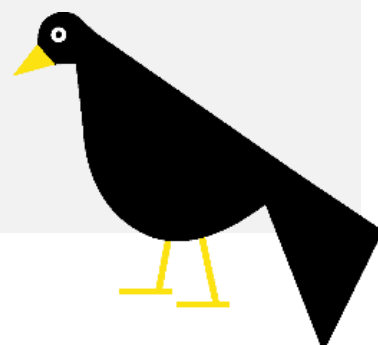
### Change the level of challenge

To make things easier, you could mark out the nature reserves ahead of time and allocate one to each group.

For more of a challenge, create a task in the style of 'The Apprentice' and ask the groups to turn their showcase into a pitch. The best pitch will win funding for the creation of a nature reserve.

### Make it accessible

Ensure the area that is being used is suitable for all your access needs. All Scout activities should be **inclusive and accessible**.



## Safety

All activities must be safely managed. Use the [safety checklist](#) to help you plan and risk assess your activity. Do a [risk assessment](#) and take appropriate steps to reduce risk. Always get approval for the activity and have suitable [supervision](#) and an [InTouch](#) process.

- **Gardening and nature**

Everyone must wash their hands after the activity has finished. Wear gloves if needed. Explain how to safely use equipment and set clear boundaries so everyone knows what's allowed.

- **Outdoor activities**

You must have permission to use the location. Always check the weather forecast and inform parents and carers of any change in venue.

